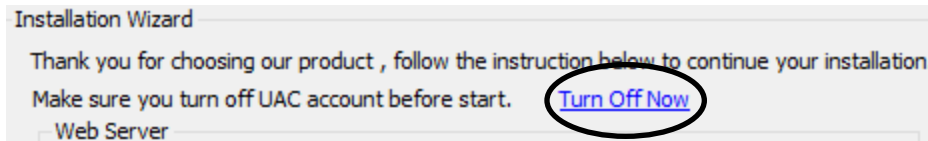


User Manual for installation Vault Enterprise Software

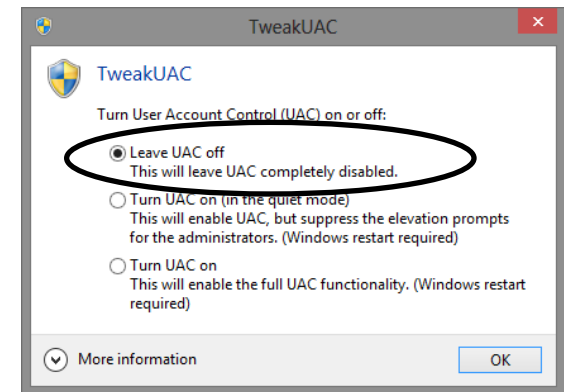
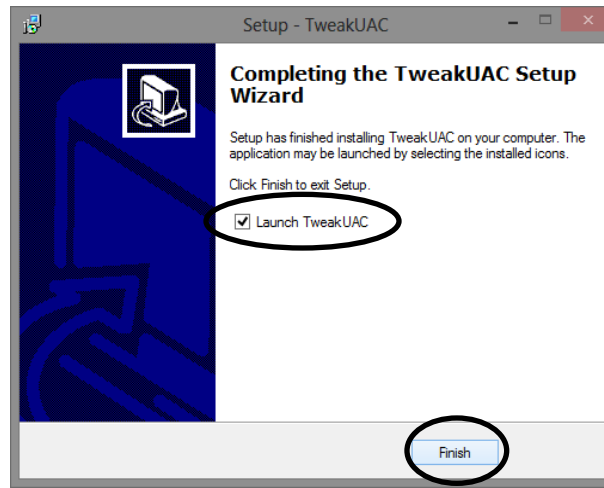
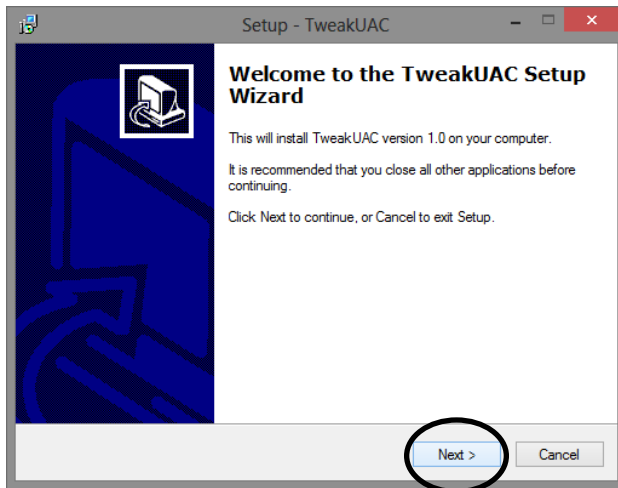
Suitable for :

- 1.Vault Enterprise Professional(Vault Pro)
- 2.Vault Enterprise Central (Vault Central)
- 3.Vault Enterprise Site(Vault Site)

1) Click Turn off to disable the UAC now.

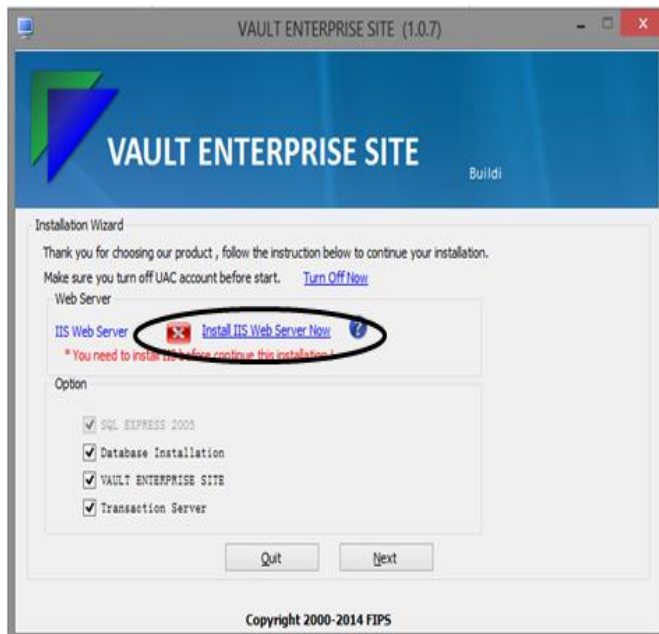


2) Install the software and select the Leave UAC Off.

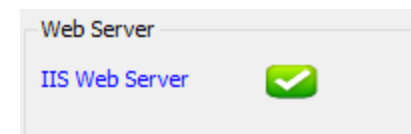
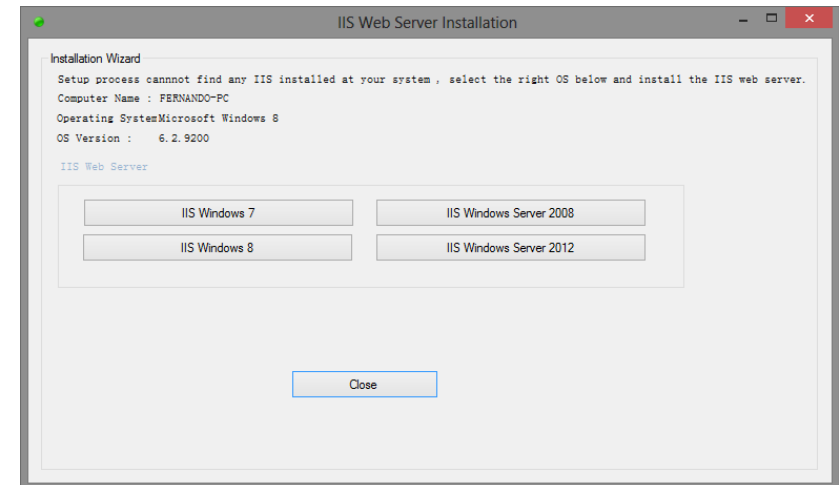


SOFTWARE INSTALLATION

- 1) For the Operation of Enterprise Vault, the Internet Information Service (IIS) must be installed. Click Install Now IIS Web Server to install.



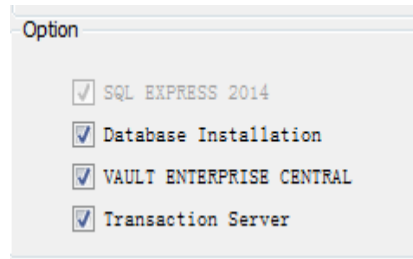
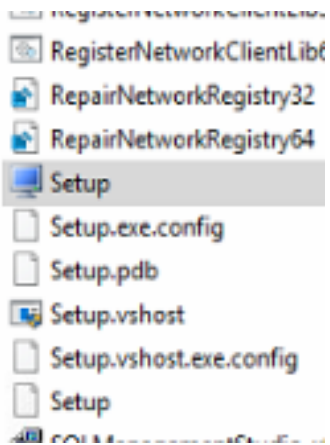
- 2) Select your operating system and wait for the end of the installation.



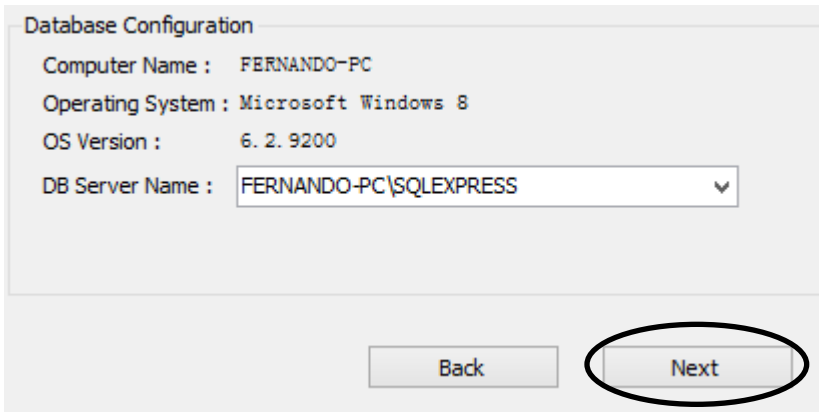
SOFTWARE INSTALLATION

Installation

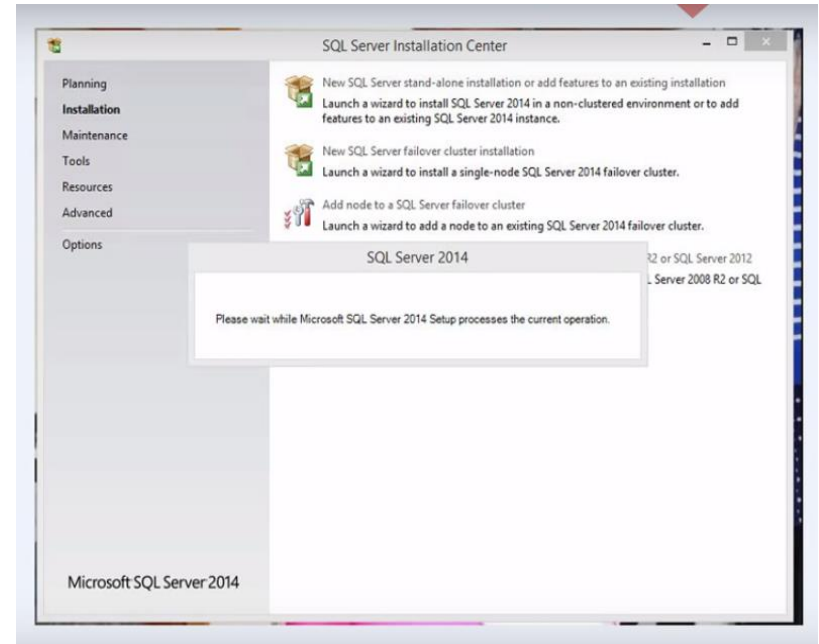
1) Right click at setup and run as administrator then Select all options, and click Next.



2) Select where you want to install the database and click Next.

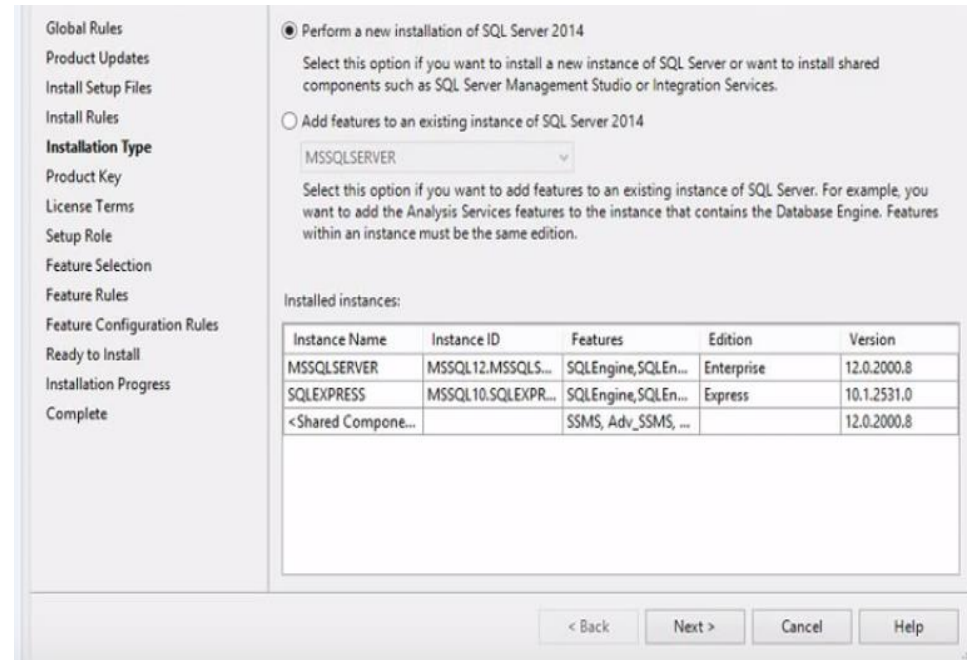
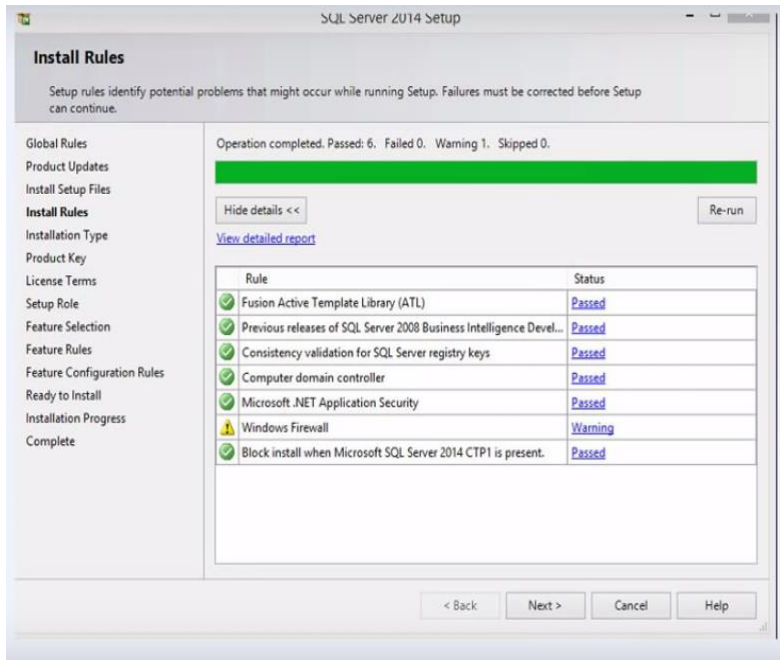


3) Installing SQL SERVER EXPRESS 2014.

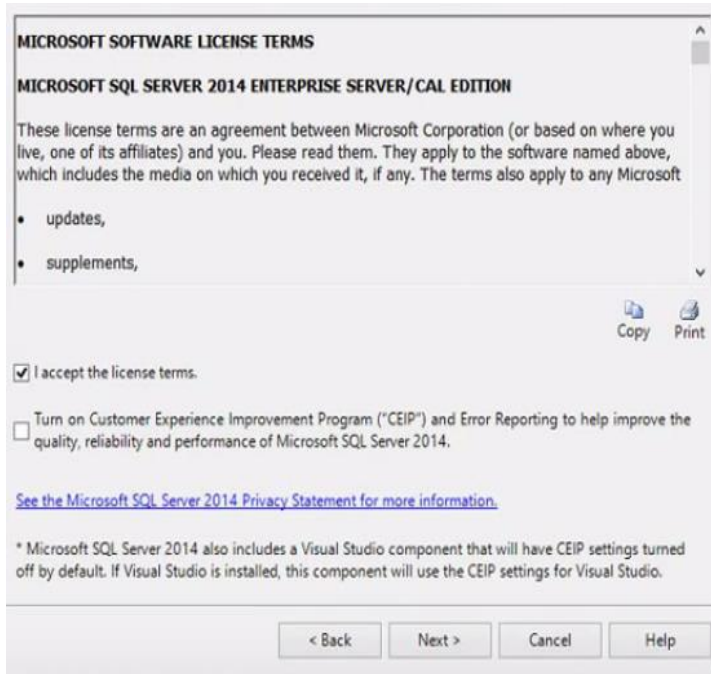


4) Next ,check Install rule and it must passed or warning.

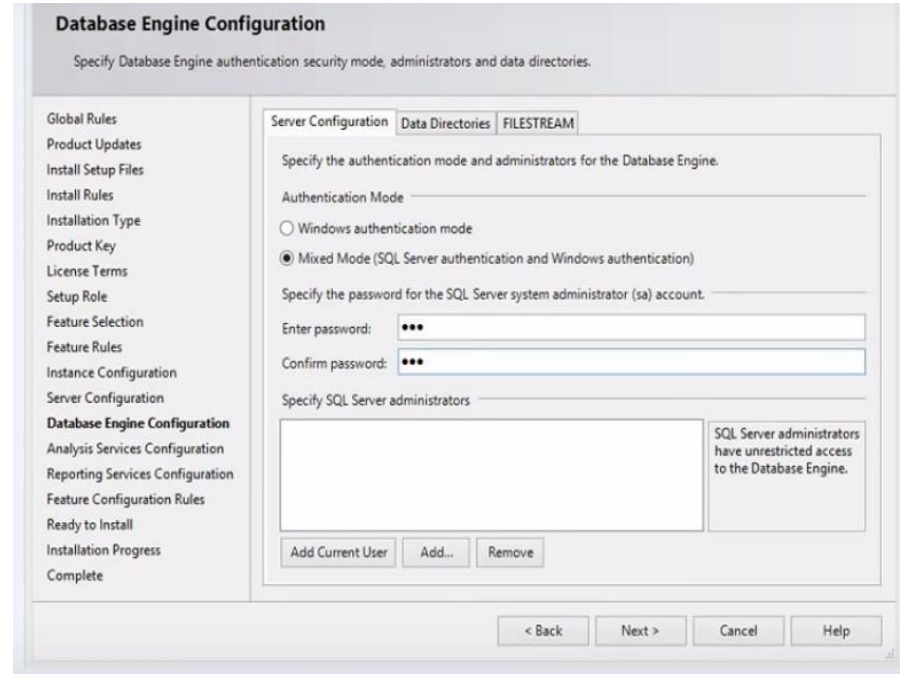
5). Click Next to install.



6) Click Accept the license term or agreement

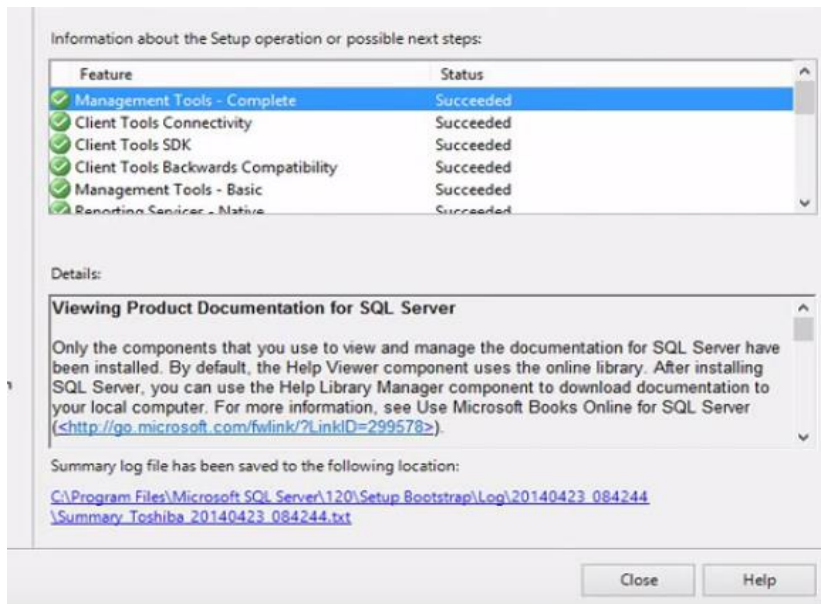


7). Key in password :passw@rd1234.



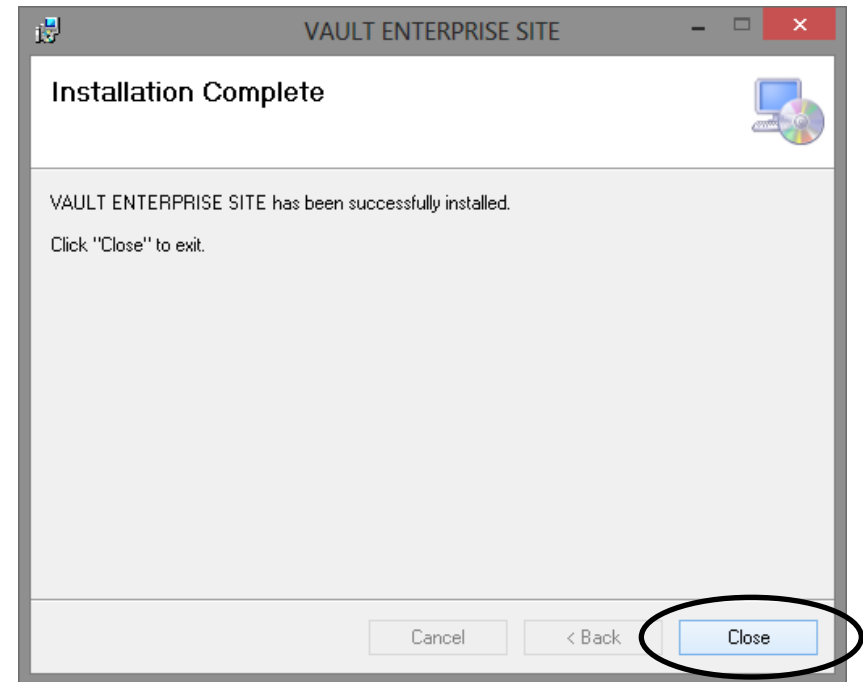
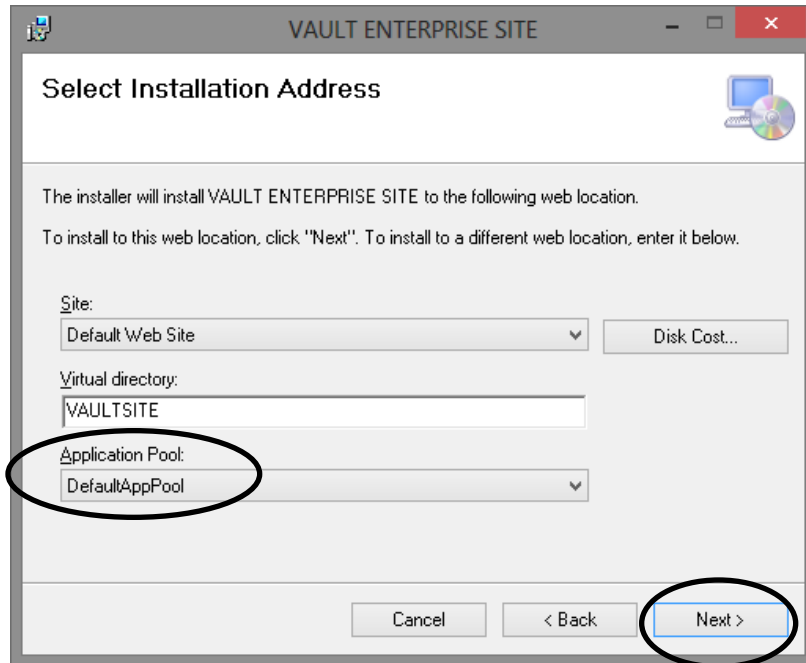
8) At the end of the installation, verify that all items are installed correctly.

9). Click close to continue next installation.



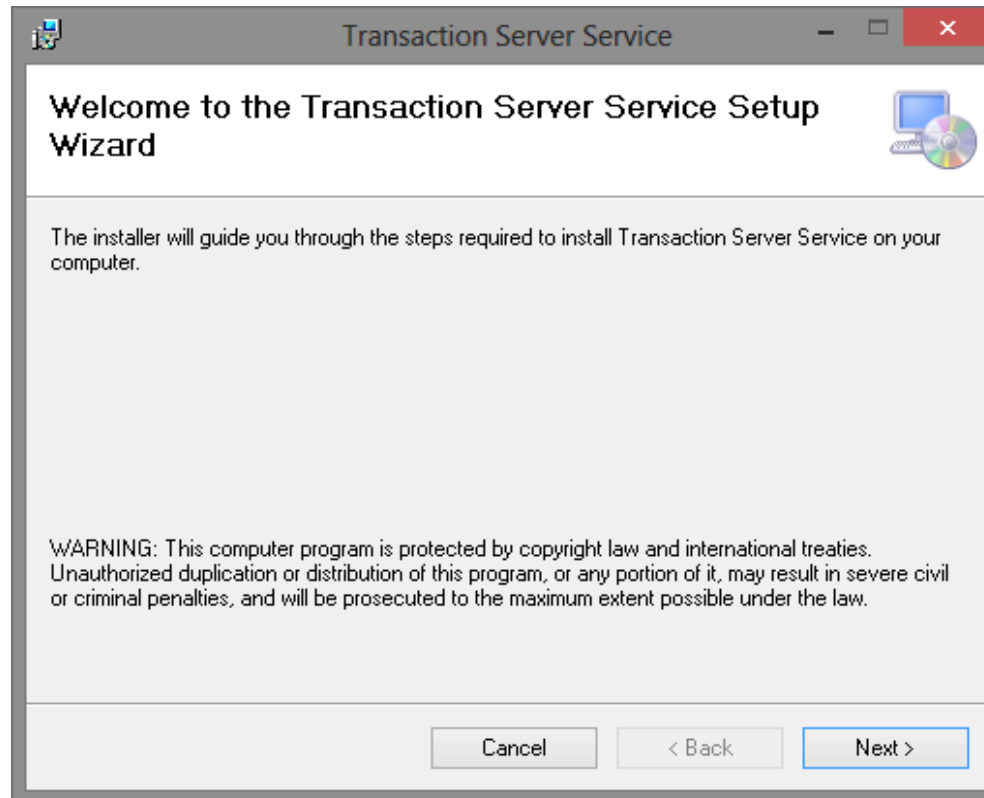
10) Select the DefaultAppPool Application Pool option and click Next.

11) Click Close to enclose the facility.



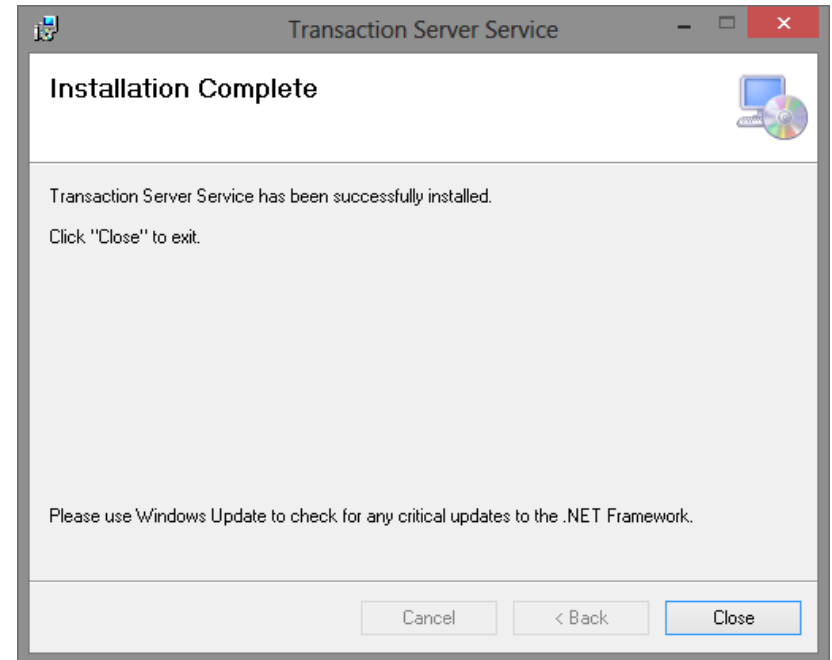
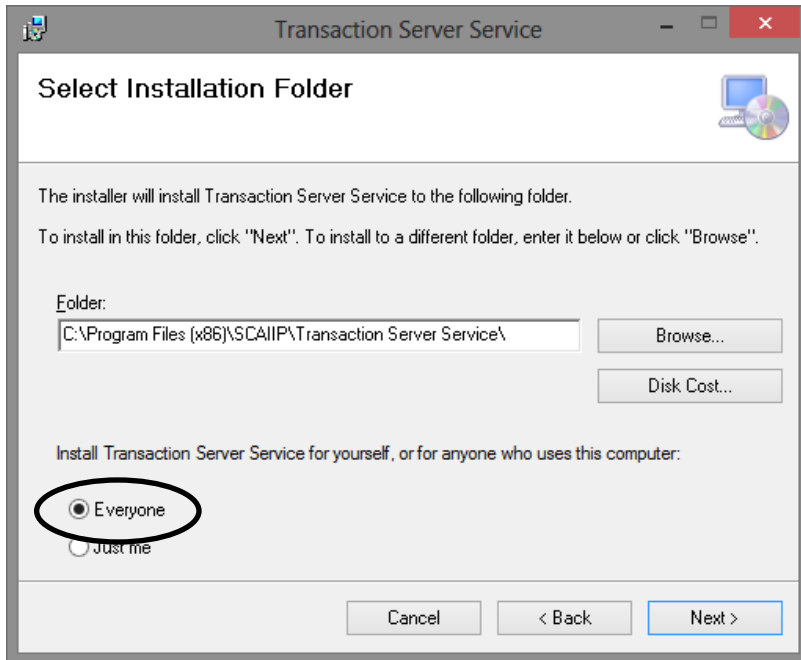
SOFTWARE INSTALLATION

12) Installing the Service Transaction Server software. Click Next to install.

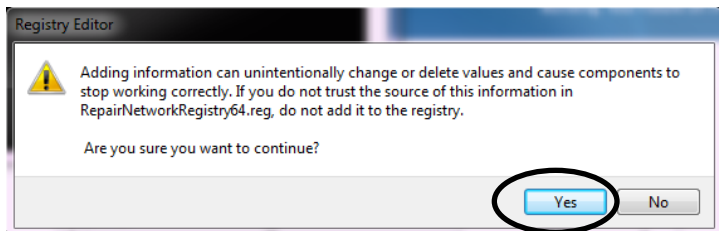


13) EVERYONE Select the option and click Next.

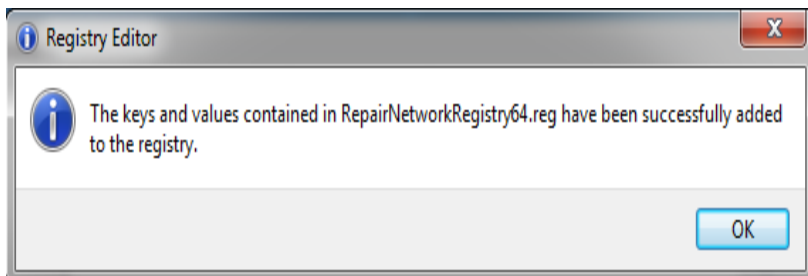
14) Click Close to enclose the facility.



15) Click to register Dll Sim necessary to Vault software work with the controllers.



17) Click ok if the edit registry was made successfully.



16) The facility is enclosed. Click Finish.

